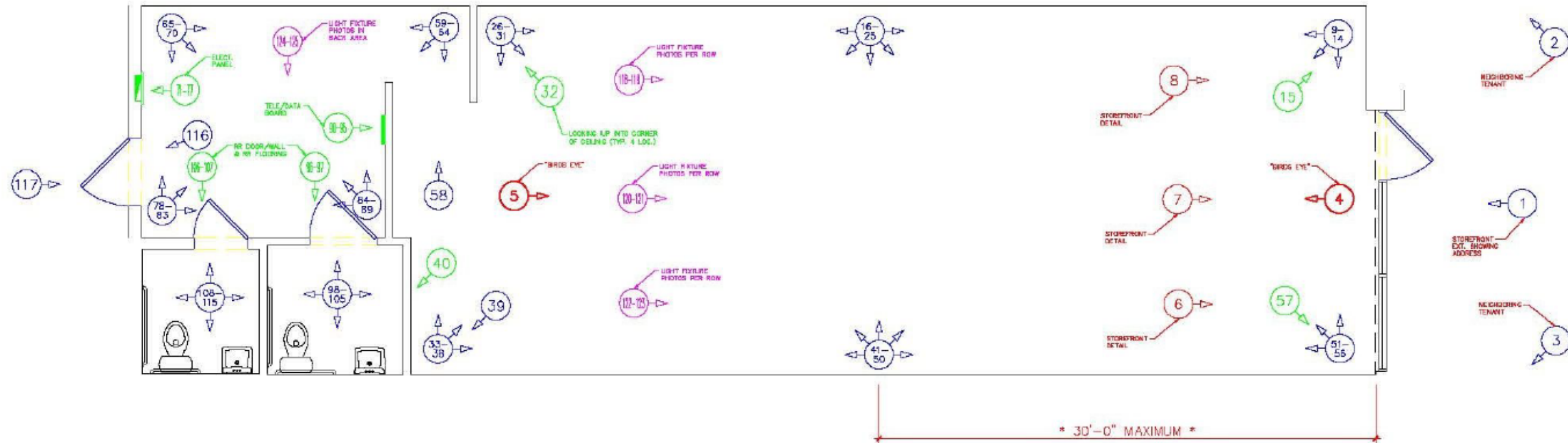


# HRB 2025 PHOTO "STAND HERE" MAP

GENERAL PHOTO NOTES:

- SEE THE HRB 2025 SCOPE OF WORK DOCUMENT FOR SPECIFIC PHOTO REQUIREMENTS.
- NOTE THAT THE "BIRD'S EYE" PHOTOS ARE THE FIRST PHOTOS TAKEN UPON ENTERING THE SPACE ALONG WITH STOREFRONT DETAIL PHOTOS.
- TELE/DATA BOARD, DATA SERVER, ELECT. PANELS, AND PRINTER STAND OUTLET PHOTOS MUST BE TAKEN IN SEQUENCE WITH ALL PHOTOS DEPENDING ON THEIR LOCATION.
- UNUSUAL CONDITIONS PHOTOS MUST BE TAKEN IN SEQUENCE WITH ALL PHOTOS DEPENDING ON THEIR LOCATION.
- LIGHTING PHOTOS MUST BE TAKEN OR PLACED AT THE END OF THE PHOTO ARRAY
- TELE/DATA BOARD PHOTOS
  - TELE/DATA BOARD IN CONTEXT AND "QUADRANT" PHOTOS.
  - "QUADRANT" PHOTOS ARE CRITICAL PHOTOS AND WILL REQUIRE A RETURN VISIT IF MISSING.
- ELECTRICAL PANELS
  - OVERALL PHOTO OF PANEL WITH DOOR OPEN AND CLOSED
  - CLOSE UP PHOTOS OF CIRCUITS, PANEL SCHEDULES, AND RATING LABELS.
- RESTROOM DOOR PHOTOS
  - RESTROOM DOOR IN CONTEXT
  - CLOSE-UP PHOTO OF RESTROOM/DOOR THRESHOLD TO SHOW FLOOR MATERIALS
- REAR DOOR PHOTOS
  - ONE PHOTO OF DOOR FROM INTERIOR OF SPACE IN CONTEXT
  - ONE PHOTO OF DOOR FROM EXTERIOR IN CONTEXT
- LIGHTING FIXTURE PHOTOS
  - ONE FIXTURE PER ROW IN TAX PREP AREA
  - ONE FIXTURE IN BACK OF AREA
  - CONTEXTUAL PHOTO TO SHOW WHERE/WHICH FIXTURE IS BEING EVALUATED
  - CLOSE UP PHOTO WITH LIGHT OPENED
- THE PHOTO SEQUENCE SHOWN HERE IS REQUIRED. THE NUMBER OF PHOTOS MAY VARY FROM SITE TO SITE.



PLEASE NOTE THAT 180 DEG. PHOTO ARRAYS ALONG ANY LENGTH OF WALL MUST BE TAKEN AT A MAXIMUM INTERVAL OF 30'-0"