

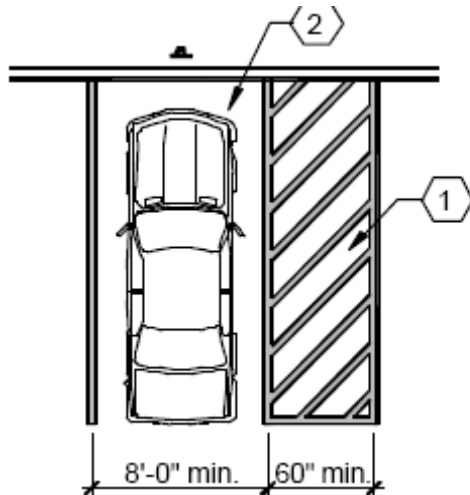
# Parking

The following schedule identifies the correct ratio of accessible and van accessible parking stalls required.

Total Parking Stalls	Minimum Accessible Stalls Required	H/C Accessible Van Stalls Required	H/C Accessible Car Stalls Required
1-25	1	1	0
26-50	2	1	1
51-75	3	1	2
75-100	4	1	3
101-150	5	1	4
151-200	6	1	5
201-300	7	1	6
301-400	8	1	7
401-500	9	2	7



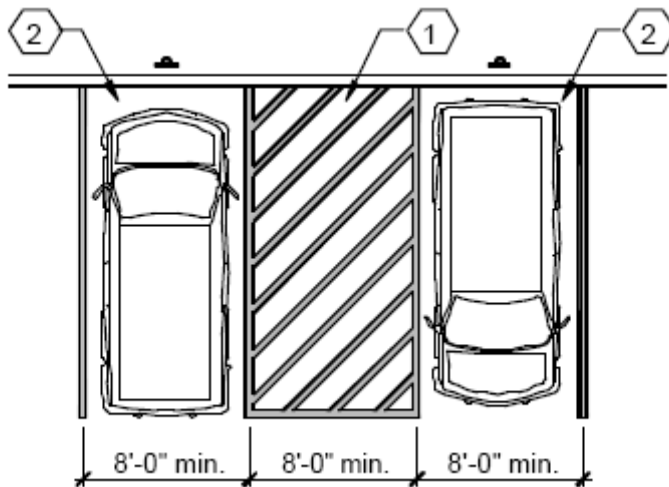
The following is accessible parking stalls and their proper designs.



#### 1. Access Aisles

- The standard access aisle is required to be a minimum of 60" wide.
- The van access aisle is required to be a minimum of 96" wide. One of every 8 accessible spaces is required to be served by a van accessible access aisle.
- *It is recommended that the access aisle and parking space widths be measured from centerline to centerline of the striping.*
- The access aisle must be marked to prevent vehicles from parking in this area.
- *It is recommended that the access aisle be striped as shown in the diagrams. Attention to slip resistance of marking products is recommended.*
- Two parking spaces may share one access aisle.

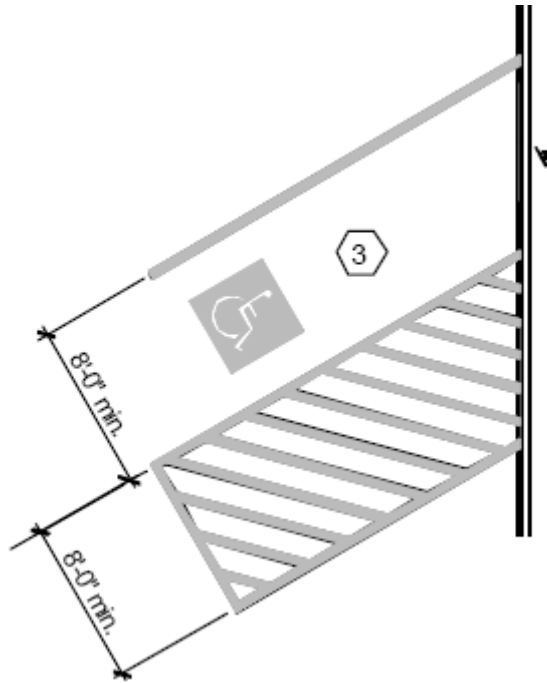
Single Stall Requirement with Accessible Aisle



#### 2. Accessible Parking Spaces

- The accessible parking space is required to be a minimum of 96" wide.
- Each space is required to be identified with a vertically mounted sign.
- *It is recommended that the vertical signage be centered at the front of the parking space. State or Local Codes may have varying requirements.*

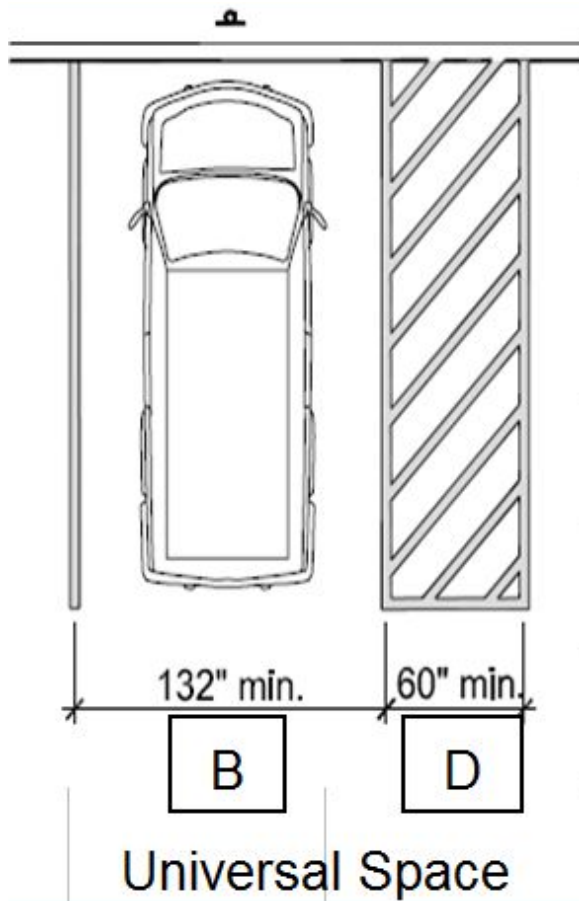
Double Stall with shared Accessible Aisle



**Diagonal Accessible Parking**

### 3. Diagonal Accessible Parking

- When diagonal accessible parking spaces are provided, the width for the access aisle and parking space must be measured perpendicularly to the aisle borders.
- *It is recommended that access aisle be located on the passenger side of the parking space.*



# Sign Installation Diagrams

## Parking Signage

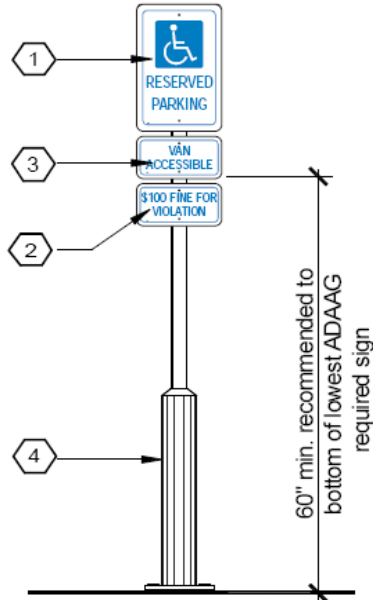


Diagram 6.0.1

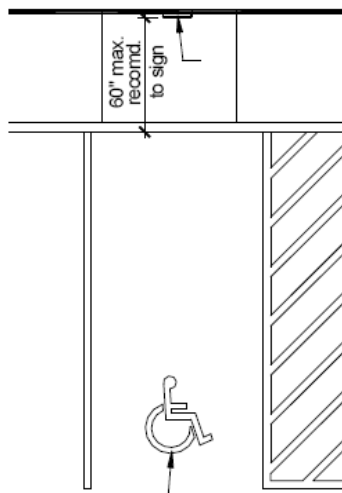


Diagram 6.0.2

Section 4.6.4 of the ADAAG Standards requires each accessible parking space to be identified with vertical signage.

### 1. Parking Signage

- The sign designating the parking space as accessible must depict the International Symbol of Accessibility (ISA). The sign must also use text to identify the space as reserved.

- It is recommended that the U.S. Department of Transportation Standard R 7-8 sign be mounted in front of and centered on the parking space. State and Local Codes may have varying requirements.*

### 2. Fine Signage

- Some state or local codes require an additional sign that indicates a fine amount for parking in the reserved space without a valid state accessible parking registration. Fine amount may vary.*

### 3. Van Accessible Signage

- Each van accessible parking aisle is also required to be identified with a sign with the text, "Van Accessible" mounted below the ISA. See 6.0.1

- It is recommended that the U.S. Department of Transportation R7-8a sign be used to designate each van accessible parking space.*

### 4. Sign Mounting

- The vertical signage is required to remain visible with a vehicle parked in the space.

- It is recommended that the bottom edge of the lowest ADAAG required sign be mounted at 60" above finish grade (AFG).*

- The parking signage may also be mounted on a wall or building*

- It is recommended that the horizontal dimension from the sign placement to the front of the space be 60" or less. (see diagram 6.0.2)*

- If the sign is located where it could be damaged by vehicles, a bollard or other protection is recommended.*

### 5. Pavement Markings

- ADAAG does not require the ISA to be painted on the pavement of the parking aisle. Local or State Codes may have additional requirements



One accessible space is required to be served by a 96" wide access aisle.

This space is also required to be identified with a "van accessible" sign.

Sign #343

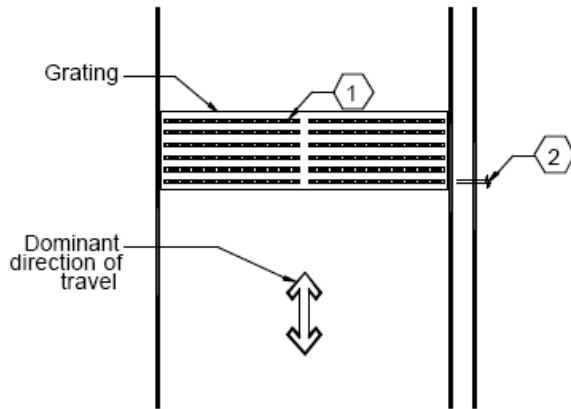
Each accessible space is required to be identified with a vertical sign designating it as accessible.

Sign #141

"Fine" sign may be required by state or local code. Fine amount may vary.

Sign #742





**Grate Openings and Direction of Travel**

**Section 4.5.4 of the ADAAG Standards** requires if gratings are located in walking surfaces, the spaces are no greater than  $\frac{1}{2}$ " in one direction.

**1. Grating Orientation**

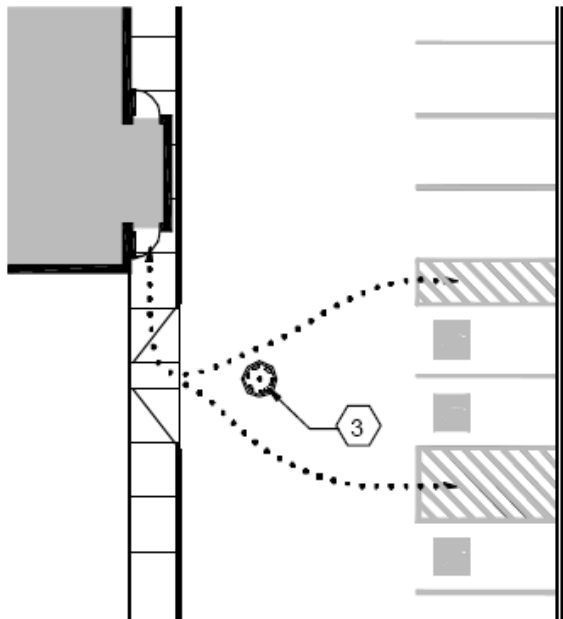
- When drainage gratings with elongated openings are located along an accessible route, the long dimension of the opening should be perpendicular to the route of travel.

**2. Grating Opening**

- The maximum opening in the direction of travel should not be greater than  $\frac{1}{2}$ ".

**3. Avoidable Grates**

- *When a 36" accessible route bypasses a grate location on a route from the accessible parking or pedestrian routes from sidewalks, it would not be necessary to remove the grate for existing conditions.*
- *If grates are being replaced or newly installed, they must meet the ADAAG standards.*



**Avoiding a Grate in the Accessible Route**

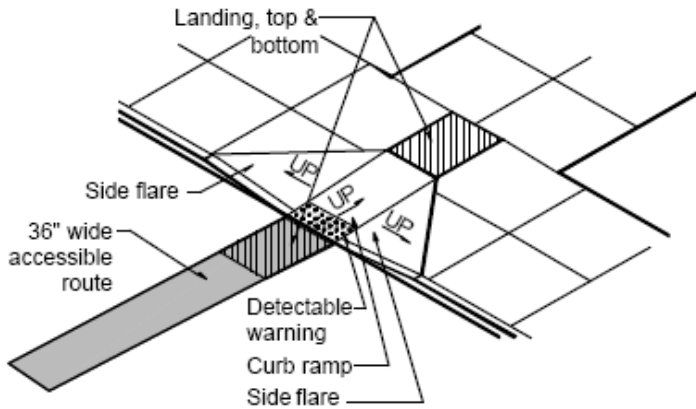
# Curb Ramps

Curb Ramps can have the following maximum slopes

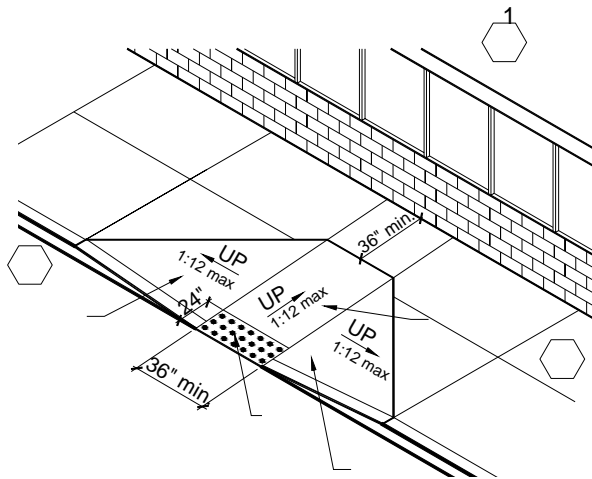
8.33% Running Slope

2.00% Cross Slope

10% Side Flares if existing



## Standard Ramp Detail when Sidewalk Space is unlimited– with Striping requirements.



## Standard Ramp Detail when Sidewalk Space is adjacent to the building. Minimum top landing space.

When parking is provided at a McDonald's restaurant, an accessible curb ramp from the parking level to the entrance level is required.

The location and type of curb ramp selected will be determined by the location of the accessible entrance, the location of the accessible parking, and the slope of the site.

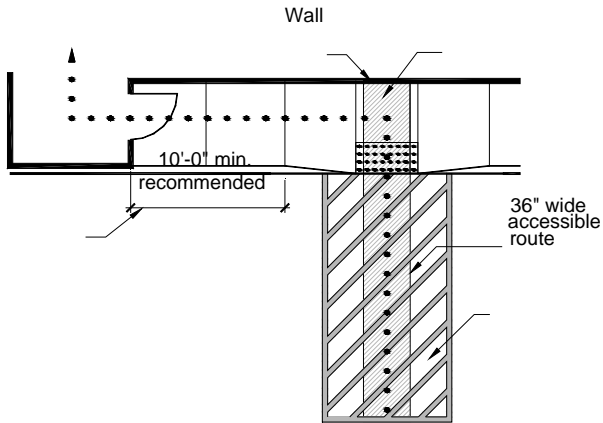
The 2004 ADA-ABA Guidelines and the 2006 IBC do not require truncated domes on curb ramps that would occur on a building site.

*Detectable warnings are required on new curb ramps if they connect to a hazardous vehicular way. State or local codes may have additional or varying detectable warning requirements.*

The running slope of a ramp is measured parallel to the route of travel up the ramp. The slope of the side flare is measured parallel to the curb.

The top landing is the level area located beyond the top of the curb ramp on a walking surface.

The bottom landing is the portion of the parking lot beyond the lower edge of the curb ramp. Designated parking spaces must not block the clear accessible route to the bottom of the curb ramp.



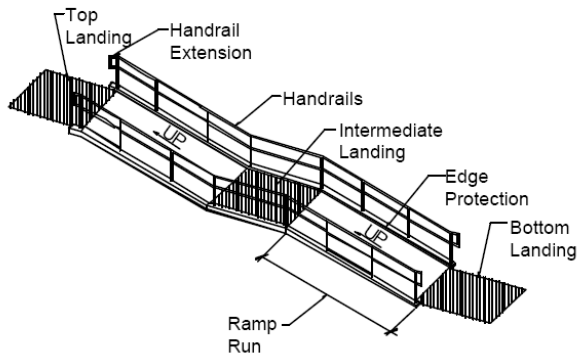
**Ramp Detail – Limited Sidewalk space – with Striping requirements.**

**Curb Ramp Flares and Entrance Door Maneuvering Clearance**

- The side flare of the curb ramp cannot overlap the required maneuvering clearance at the door.
- *It is recommended that the sloped area of the curb ramp be set a minimum of 10'-0" from the entrance door.*

# Ramps

This section is for reference only. There are no Signage requirements for these type ramps.



## Exterior Ramp (Interior is similar)

When the change in elevation from the parking level to the restaurant entrance level exceeds a height that can be transitioned with a curb ramp, a ramp is typically used.

Slope and length greatly determine a ramp's usability. ADAAG specifies a maximum slope of 8.3% (1:12) but calls for the "least possible" slope to encourage more gradual slopes which better serve children and people with limited stamina or upper body strength.

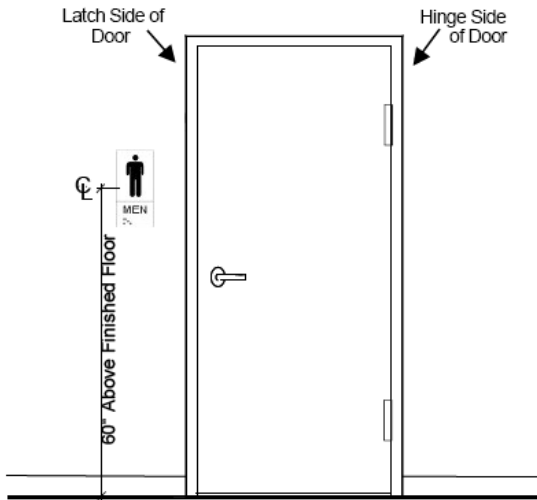
Elevations transitioned with sidewalks sloped at 5% (1:20) or less are encouraged where possible as these routes do not require additional ramp elements such as handrails or landings. When the slope of an accessible pedestrian route exceeds 5% (1:20), it is classified by ADAAG as a ramp.

Landings are required at the top and bottom of ramps. Edge protection is advised if a drop occurs. When a ramp run changes direction, or exceeds the maximum rise of 30", intermediate landings are also required.

Handrails are required on both sides of ramps and must extend beyond both the top and bottom of all ramp runs.

Handrails alone do not necessarily provide effective edge protection on the side of a ramp with a drop-off. Curbs, horizontal rails, or extended platforms are examples of edge protection that can be used to prevent crutch tips or wheelchair front caster wheels from getting caught or slipping off the edge of a ramp.

# Restroom Door Signage



ADAAG section 4.30.4 requires raised and Braille character signs designating permanent rooms or spaces (toilet rooms) to be mounted in a consistent manner so they can easily be located by visually impaired users. This section prohibits the mounting of raised and Braille character signage on the face of the toilet room door except in California.

## ADAAG 4.30.4 Toilet Room Accessible Signage Mounting Location Requirements

- Raised and Braille character signage is required be mounted on the toilet room entrance door wall on the latch side of the door. See 1.0

- If adequate room is not provided on the latch side of the door, the signage is required to be provided on the nearest adjacent wall. See 1.1 and 1.2

- The sign centerline mounting height is required to be 60". This is measured from the finished floor to the middle (centerline) of the sign.

*It is recommended the edge of the sign be set no closer than 3" from the frame of an out-swinging door so a visually impaired user would be outside of the door swing while standing in front of the sign.*



Sign mounted on the toilet room entrance door wall, on the latch side of the door.

Sign #347 - Men (shown), or #348 - Women

Sign mounted 2" from door frame.

Sign mounted 60" from floor to vertical center of sign (56" from floor to bottom of 8" sign.)



Sign #347

*Required*



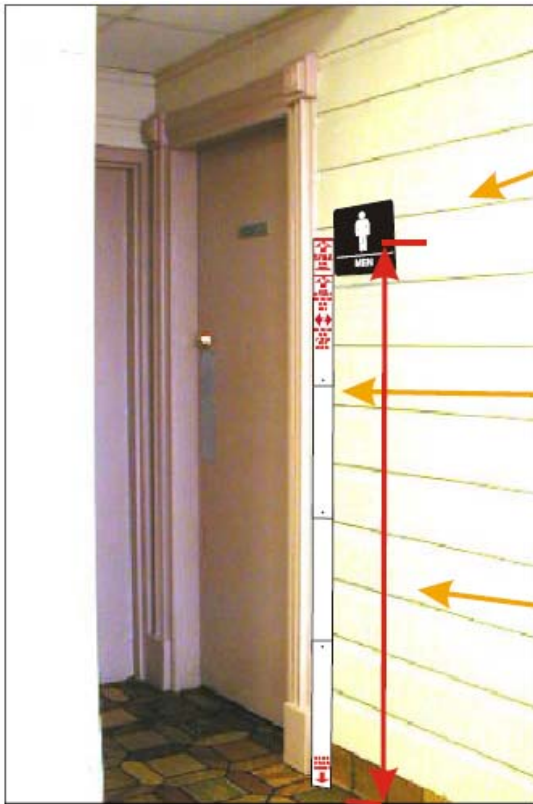
Sign #348

The following page shows what to do in cases where the design of the door and walls do not allow for proper placement. These layouts are to be used only when absolutely necessary.



Adequate room is not provided on the latch side of the toilet room door, so the sign is mounded on the adjacent wall, nearest to the latch side.  
 (Sign #348 - Women shown)

Sign mounted 60" from floor to vertical center of sign  
 (56" from floor to bottom of 8" sign.)



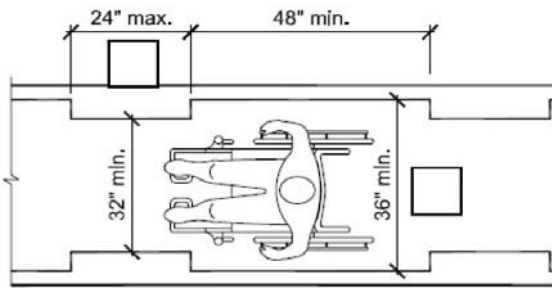
Adequate room is not provided on the latch side of the toilet room door or on the adjacent wall nearest to the latch side so the sign has been mounted on the hinge side of the door.

(Sign #347 - Men shown)

Sign mounted 2" from door frame.

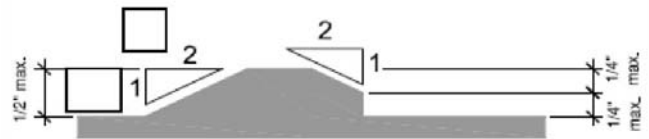
Sign mounted 60" from floor to vertical center of sign  
 (56" from floor to bottom of 8" sign.)

# Route Diagrams

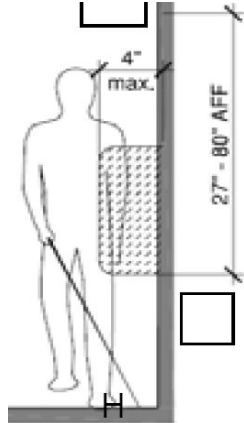


Path of travel width requirements

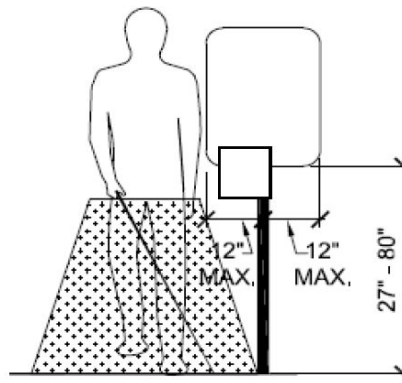
Maximum level change



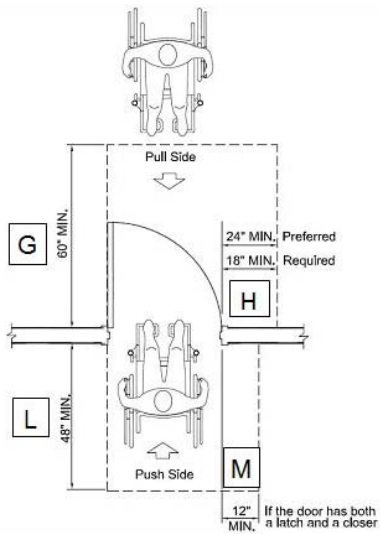
Wall mounted protruding object maximum depth



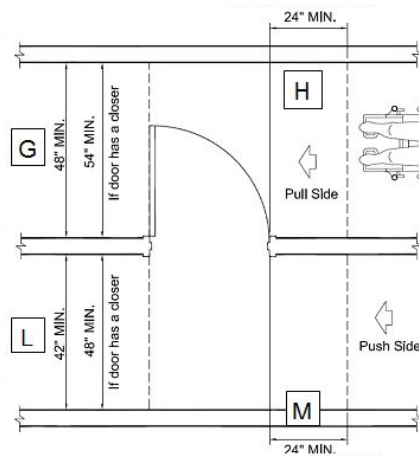
Post mounted protruding object maximum depth



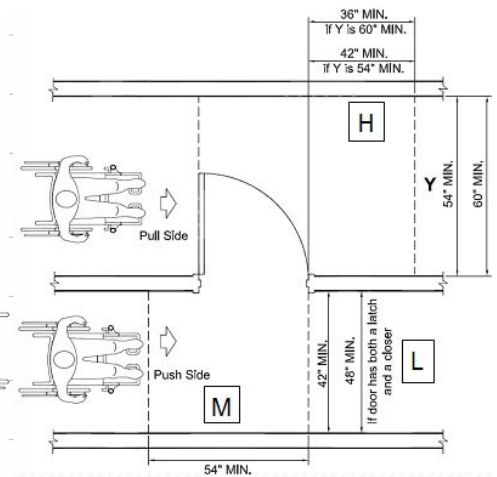
# Door Diagrams



Forward approach requirements

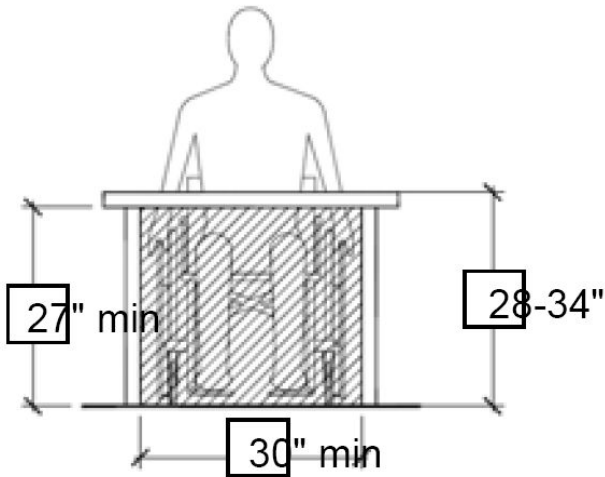


Latch side approach requirements

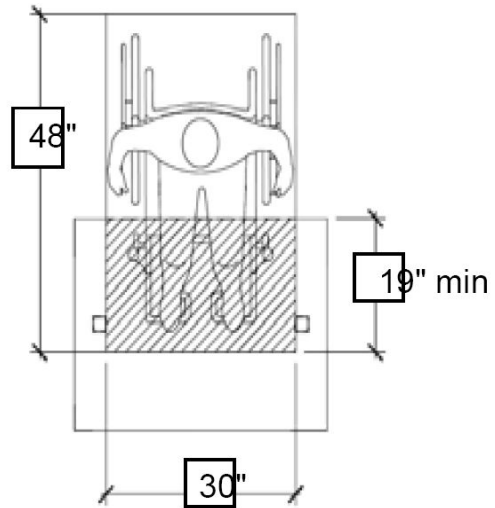


Hinge side approach requirements

# Seating Diagrams

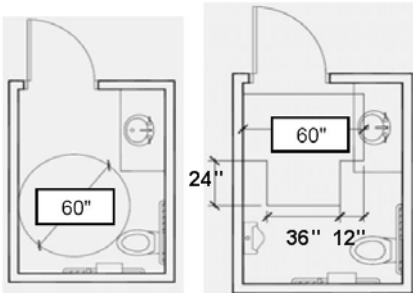


Knee space and height requirements

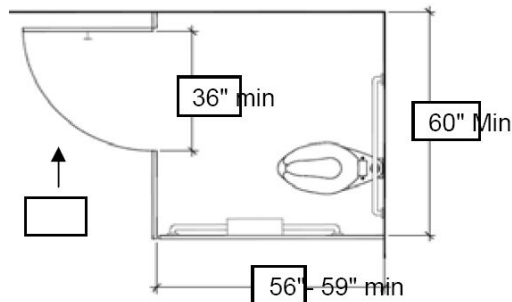


Clear space requirements

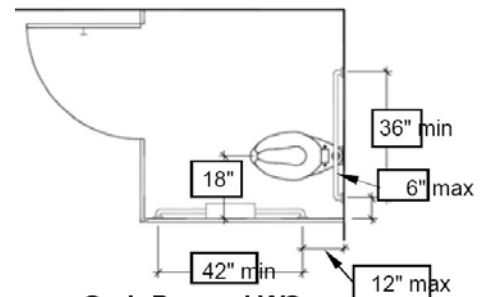
# Restroom Diagrams



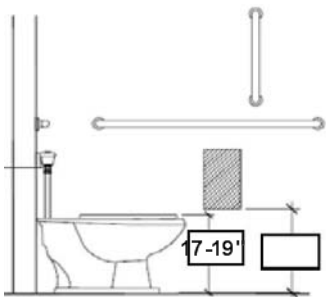
Turning Radius requirements



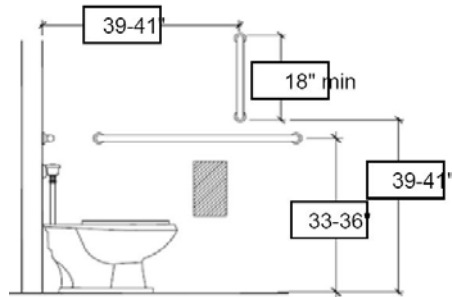
Stall size



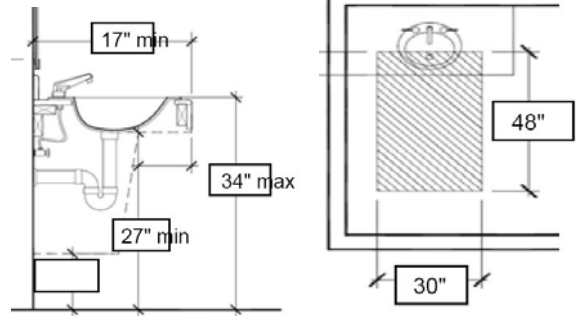
Grab Bar and WC centerline requirements



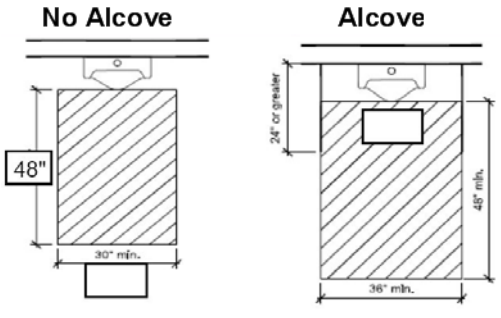
Seat and Grab Bar height requirements



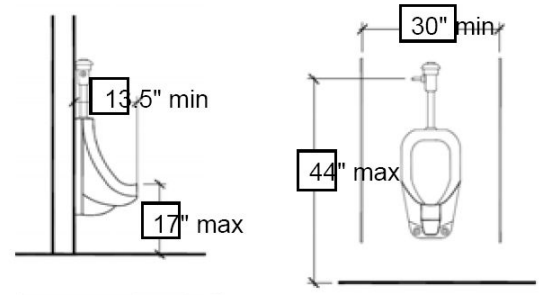
Lavatory clearance requirements



# Restroom Diagrams continued



Urinal clear space requirements



Urinal Height and depth requirements